

# Walkthrough: Create Wrapping Layout Using WrapPanel

This walkthrough shows you how to create wrapping layout using [WrapPanel](#) for wrapping the **Image** control.

## On this page:

- Prerequisites
- Creating a new ClientUI Application Project
- Creating Simple Application Using WrapPanel
- Conclusion
- Complete Code Listing

## Prerequisites

You need the following components to complete this walkthrough:

- Visual Studio 2010
- Silverlight 4 Tools for Visual Studio 2010
- Intersoft ClientUI

## Creating a new ClientUI Application Project

The first step is to create a new ClientUI Application project using **Intersoft ClientUI Application** project template in Visual Studio.

### To create the ClientUI Application project

1. Start Visual Studio 2010.
2. Create a new ClientUI Application project using **Intersoft ClientUI Application** project template. To learn more, see [Walkthrough: Create New Intersoft ClientUI Application Template](#).

### To add the resources file

1. In your project, create new folder with name **Images**.
2. In **Images** folder, copy the images from [Intersoft Installation Folder]\Intersoft WebUI Studio 2010 R1\Samples\SL4\ClientUI\Samples\Intersoft.ClientUI.Samples.Assets\Images\Hotels\

## Creating Simple Application Using WrapPanel

This section shows you how to create layout using [WrapPanel](#).

1. First change the **d:DesignWidth** property to **800** and the **d:DesignHeight** property to **600** in **UXPage**.
2. Add **UXWindow** control to the **LayoutRoot** and set the following properties to the control.

<a href="#">CanMinimize</a>	False
<a href="#">CanMaximize</a>	False
<a href="#">CanClose</a>	False
<a href="#">CanResize</a>	True
<a href="#">HeaderDisplayMode</a>	Content
<a href="#">IsClientVisible</a>	True
<a href="#">IsActive</a>	True
<a href="#">Header</a>	Hotels
<a href="#">Width</a>	700
<a href="#">Height</a>	400

3. Add **UXScrollViewer** control to the **UXWindow**.
4. Add **WrapPanel** layout to the **UXScrollViewer** control.

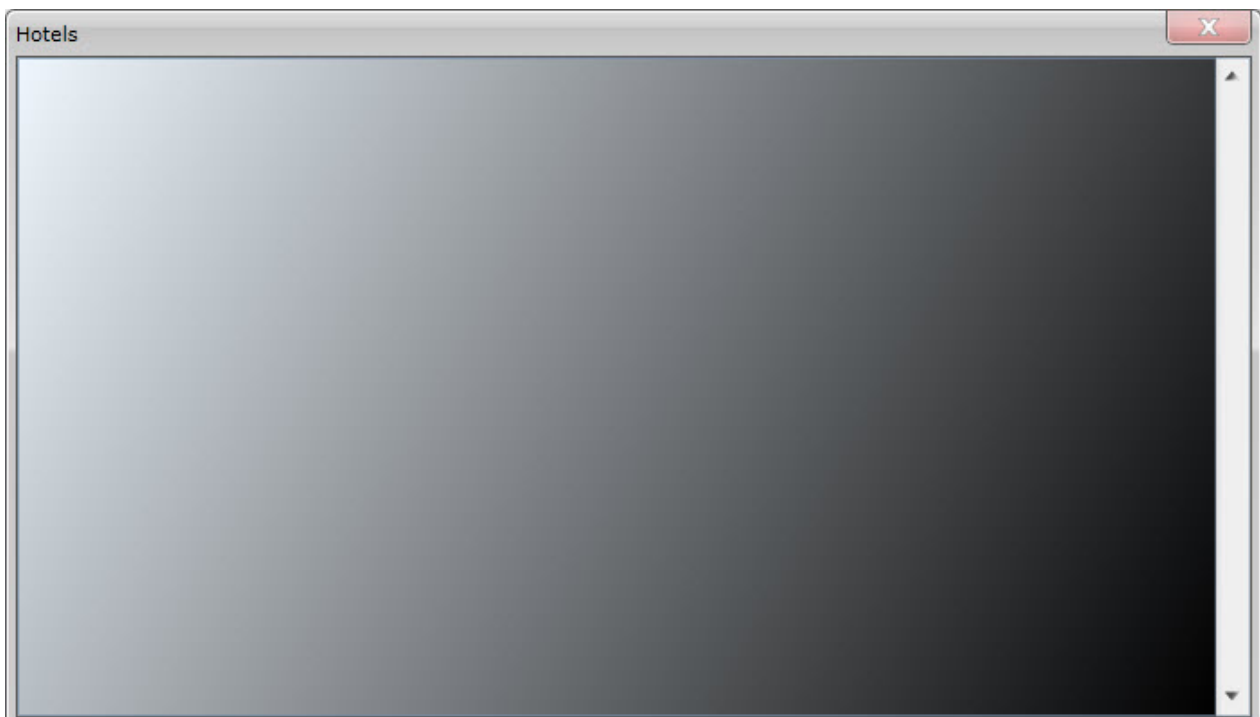
## XAML

```
<Grid x:Name="LayoutRoot">
  <Intersoft:UXWindow CanMinimize="False" CanMaximize="False"
  CanClose="False"
    CanResize="True" HeaderDisplayMode="Content"
      IsClientVisible="True" IsActive="True" Header="Hotels"
      Width="700" Height="400">
    <Intersoft:UXScrollViewer>
      <Intersoft:WrapPanel>
      </Intersoft:WrapPanel>
    </Intersoft:UXScrollViewer>
  </Intersoft:UXWindow>
</Grid>
```

5. Set **Background** for **WrapPanel** using **LinearGradientBrush**.
6. Add **GradientStop** to the **LinearGradientBrush** and set the **Color** property to **AliceBlue** and the **Offset** property to **1**.
7. Add more **GradientStop** to the **LinearGradientBrush** and repeat step 6.

## XAML

```
<Intersoft:WrapPanel>
  <Intersoft:WrapPanel.Background>
    <LinearGradientBrush>
      <GradientStop Color="AliceBlue" Offset="0" />
      <GradientStop Color="Black" Offset="1" />
    </LinearGradientBrush>
  </Intersoft:WrapPanel.Background>
</Intersoft:WrapPanel>
```

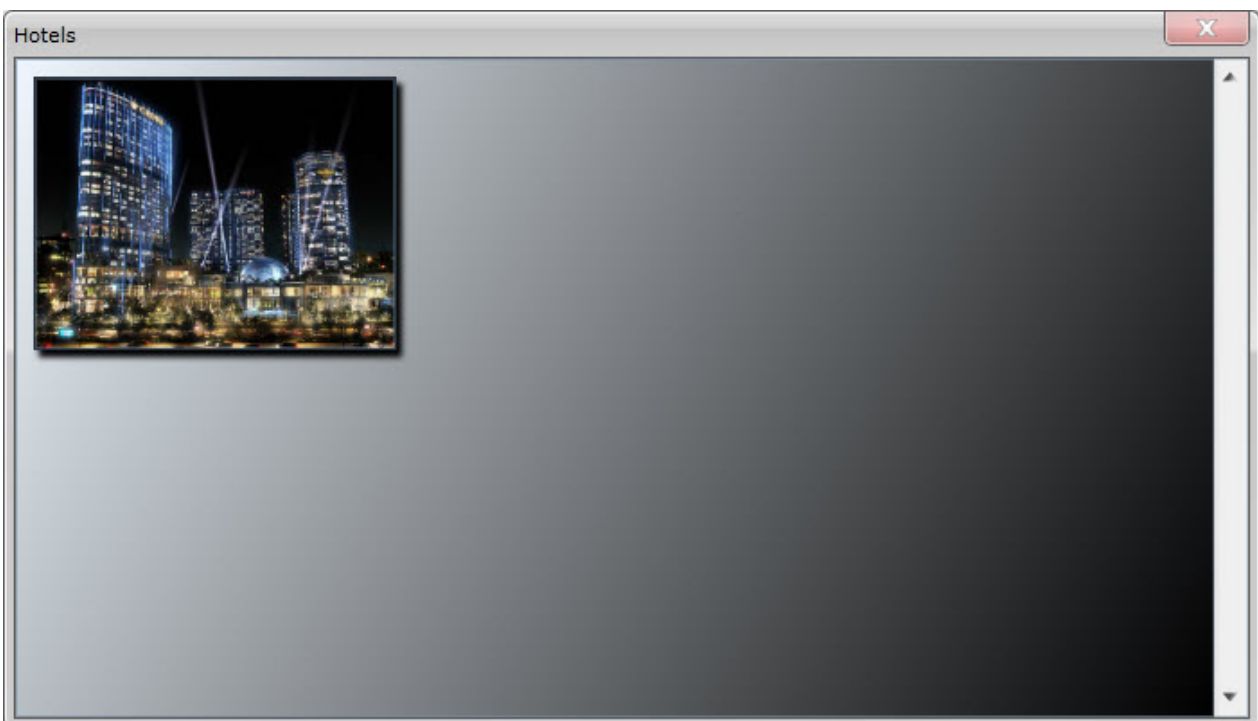


8. Add **Border** to the **WrapPanel** and set the **Margin** property to **10 10 0 0**, the **BorderBrush** property to **Black** and the **BorderThickn**

- ess property to 1.
9. Add **DropShadowEffect** to the **Border**.
  10. Add **Image** control to the **Border** and set the **Source** property to `/CreateWrappingLayoutUsingWrapPanel;component/Images/altira-macau.jpg`, the **Height** property to **150** and the **ToolTipService.ToolTip** property to **Altira macau**.

### XAML

```
<Border Margin="10 10 0 0" BorderBrush="Black" BorderThickness="1">
  <Border.Effect>
    <DropShadowEffect />
  </Border.Effect>
  <Image
Source="/CreateWrappingLayoutUsingWrapPanel;component/Images/altira-macau.jpg"
  Height="150" ToolTipService.ToolTip="Altira macau" />
</Border>
```



11. Add more **Border** and **Image** control to the **WrapPanel** and repeat step 8-10.

### XAML

```
<Intersoft:WrapPanel>
  <Intersoft:WrapPanel.Background>
    ...
  </Intersoft:WrapPanel.Background>
  <Border Margin="10 10 0 0" BorderBrush="Black" BorderThickness="1">
    <Border.Effect>
      <DropShadowEffect />
    </Border.Effect>
    <Image
Source="/CreateWrappingLayoutUsingWrapPanel;component/Images/altira-macau.jpg"
      Height="150" ToolTipService.ToolTip="Altira macau" />
  </Border>
  <Border Margin="10 10 0 0">
```

```

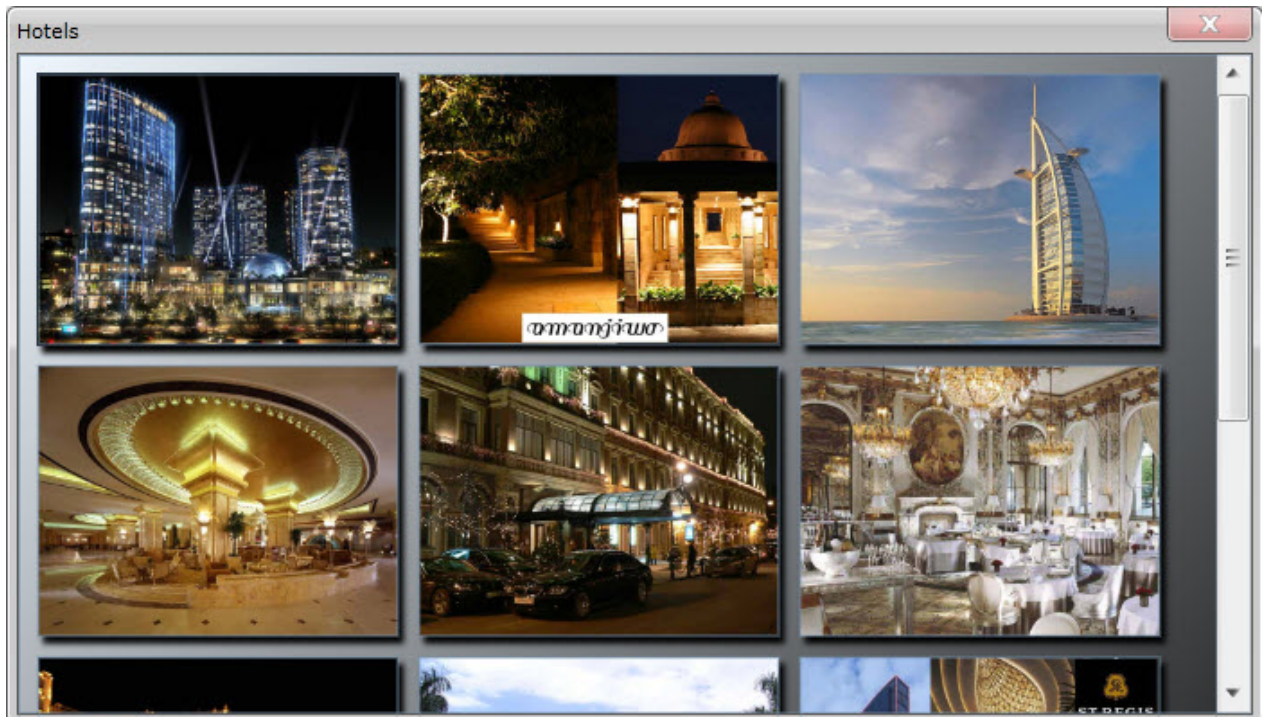
        <Border.Effect>
            <DropShadowEffect />
        </Border.Effect>
        <Image
Source="/CreateWrappingLayoutUsingWrapPanel;component/Images/amanjiwo-resort.j
pg"
            Height="150" ToolTipService.ToolTip="Amanjiwo resort" />
    </Border>
    <Border Margin="10 10 0 0">
        <Border.Effect>
            <DropShadowEffect />
        </Border.Effect>
        <Image
Source="/CreateWrappingLayoutUsingWrapPanel;component/Images/burj-al-arab.jpg"
            Height="150" ToolTipService.ToolTip="Burj al arab" />
    </Border>
    <Border Margin="10 10 0 0">
        <Border.Effect>
            <DropShadowEffect />
        </Border.Effect>
        <Image
Source="/CreateWrappingLayoutUsingWrapPanel;component/Images/emirates-palace.j
pg"
            Height="150" ToolTipService.ToolTip="Emirates palace" />
    </Border>
    <Border Margin="10 10 0 0">
        <Border.Effect>
            <DropShadowEffect />
        </Border.Effect>
        <Image
Source="/CreateWrappingLayoutUsingWrapPanel;component/Images/grand-hotel-europ
e.jpg"
            Height="150" ToolTipService.ToolTip="Grand hotel Europe" />
    </Border>
    <Border Margin="10 10 0 0">
        <Border.Effect>
            <DropShadowEffect />
        </Border.Effect>
        <Image
Source="/CreateWrappingLayoutUsingWrapPanel;component/Images/le-meurice.jpg"
            Height="150" ToolTipService.ToolTip="Le meurice" />
    </Border>
    <Border Margin="10 10 0 0">
        <Border.Effect>
            <DropShadowEffect />
        </Border.Effect>
        <Image
Source="/CreateWrappingLayoutUsingWrapPanel;component/Images/mardan-place.jpg"
            Height="150" ToolTipService.ToolTip="Mardan place" />
    </Border>
    <Border Margin="10 10 0 0">
        <Border.Effect>
            <DropShadowEffect />
        </Border.Effect>
        <Image
Source="/CreateWrappingLayoutUsingWrapPanel;component/Images/palazzo-versace.j
pg"

```

```
                Height="150" ToolTipService.ToolTip="Palazzo versace" />
</Border>
<Border Margin="10 10 0 0">
    <Border.Effect>
        <DropShadowEffect />
    </Border.Effect>
    <Image
Source="/CreateWrappingLayoutUsingWrapPanel;component/Images/st-regis.jpg"
        Height="150" ToolTipService.ToolTip="St regis" />
</Border>
<Border Margin="10 10 0 0">
    <Border.Effect>
        <DropShadowEffect />
    </Border.Effect>
    <Image
Source="/CreateWrappingLayoutUsingWrapPanel;component/Images/swissotel-berlin.
jpg"
        Height="150" ToolTipService.ToolTip="Swiss hotel berlin" />
</Border>
<Border Margin="10 10 0 0">
    <Border.Effect>
        <DropShadowEffect />
    </Border.Effect>
    <Image
Source="/CreateWrappingLayoutUsingWrapPanel;component/Images/thornbury-castle-
hotel.jpg"
        Height="150" ToolTipService.ToolTip="Thornbury castle hotel"
/>
</Border>
<Border Margin="10 10 0 0">
    <Border.Effect>
        <DropShadowEffect />
    </Border.Effect>
    <Image
Source="/CreateWrappingLayoutUsingWrapPanel;component/Images/town-house-galler
ia.jpg"

```

```
Height="150" ToolTipService.ToolTip="Town house galleria" />  
</Border>  
</Intersoft:WrapPanel>
```



12. Finally, save and run the project.

After the application is running in the browser, you can try to resize the window you will see the content will follow the size of the window, such as shown in the following figure.



Conclusion

In this walkthrough, you have learned how to create ClientUI project using project template. You also learned how to create the [WrapPanel](#) for layouting.

## Complete Code Listing

This section lists the complete code used in this walkthrough.

### MainPage.xaml

#### XAML

```
<Intersoft:UXPage
    xmlns="http://schemas.microsoft.com/winfx/2006/xaml/presentation"
    xmlns:x="http://schemas.microsoft.com/winfx/2006/xaml"
    xmlns:d="http://schemas.microsoft.com/expression/blend/2008"
    xmlns:mc="http://schemas.openxmlformats.org/markup-compatibility/2006"
    mc:Ignorable="d"
    xmlns:Intersoft="http://intersoft.clientui.com/schemas"
    x:Class="CreateWrappingLayoutUsingWrapPanel.MainPage"
    Title="MainPage Page"
    d:DesignWidth="800" d:DesignHeight="600">
    <Grid x:Name="LayoutRoot">
        <Intersoft:UXWindow CanMinimize="False" CanMaximize="False"
            CanClose="False" CanResize="True"
            HeaderDisplayMode="Content"
                IsClientVisible="True" IsActive="True"
                Header="Hotels"
                Width="700" Height="400">
            <Intersoft:UXScrollViewer>
                <Intersoft:WrapPanel>
                    <Intersoft:WrapPanel.Background>
                        <LinearGradientBrush>
                            <GradientStop Color="AliceBlue" Offset="0" />
                            <GradientStop Color="Black" Offset="1" />
                        </LinearGradientBrush>
                    </Intersoft:WrapPanel.Background>
                    <Border Margin="10 10 0 0" BorderBrush="Black"
                        BorderThickness="1">
                        <Border.Effect>
                            <DropShadowEffect />
                        </Border.Effect>
                        <Image
                            Source="/CreateWrappingLayoutUsingWrapPanel;component/Images/altira-macau.jpg"
                            Height="150" ToolTipService.ToolTip="Altira macau" />
                        </Border>
                    <Border Margin="10 10 0 0">
                        <Border.Effect>
                            <DropShadowEffect />
                        </Border.Effect>
                        <Image
                            Source="/CreateWrappingLayoutUsingWrapPanel;component/Images/amanjiwo-resort.jpg"
                            Height="150" ToolTipService.ToolTip="Amanjiwo resort"
                        />
                    </Border>
                    <Border Margin="10 10 0 0">
                        <Border.Effect>
```



```

        <DropShadowEffect />
    </Border.Effect>
    <Image
Source="/CreateWrappingLayoutUsingWrapPanel;component/Images/burj-al-arab.jpg"
        Height="150" ToolTipService.ToolTip="Burj al arab" />
    </Border>
    <Border Margin="10 10 0 0">
        <Border.Effect>
            <DropShadowEffect />
        </Border.Effect>
        <Image
Source="/CreateWrappingLayoutUsingWrapPanel;component/Images/emirates-palace.jpg"
        Height="150" ToolTipService.ToolTip="Emirates palace"
/>
    </Border>
    <Border Margin="10 10 0 0">
        <Border.Effect>
            <DropShadowEffect />
        </Border.Effect>
        <Image
Source="/CreateWrappingLayoutUsingWrapPanel;component/Images/grand-hotel-europe.jpg"
        Height="150" ToolTipService.ToolTip="Grand hotel
Europe" />
    </Border>
    <Border Margin="10 10 0 0">
        <Border.Effect>
            <DropShadowEffect />
        </Border.Effect>
        <Image
Source="/CreateWrappingLayoutUsingWrapPanel;component/Images/le-meurice.jpg"
        Height="150" ToolTipService.ToolTip="Le meurice" />
    </Border>
    <Border Margin="10 10 0 0">
        <Border.Effect>
            <DropShadowEffect />
        </Border.Effect>
        <Image
Source="/CreateWrappingLayoutUsingWrapPanel;component/Images/mardan-place.jpg"
        Height="150" ToolTipService.ToolTip="Mardan place" />
    </Border>
    <Border Margin="10 10 0 0">
        <Border.Effect>
            <DropShadowEffect />
        </Border.Effect>
        <Image
Source="/CreateWrappingLayoutUsingWrapPanel;component/Images/palazzo-versace.jpg"
        Height="150" ToolTipService.ToolTip="Palazzo versace"
/>
    </Border>
    <Border Margin="10 10 0 0">
        <Border.Effect>
            <DropShadowEffect />
        </Border.Effect>
        <Image
Source="/CreateWrappingLayoutUsingWrapPanel;component/Images/st-regis.jpg"
        Height="150" ToolTipService.ToolTip="St regis" />
    </Border>
    <Border Margin="10 10 0 0">

```

```
        <Border.Effect>
            <DropShadowEffect />
        </Border.Effect>
        <Image
Source="/CreateWrappingLayoutUsingWrapPanel;component/Images/swissotel-berlin.jpg"
        Height="150" ToolTipService.ToolTip="Swiss hotel
berlin" />
    </Border>
    <Border Margin="10 10 0 0">
        <Border.Effect>
            <DropShadowEffect />
        </Border.Effect>
        <Image
Source="/CreateWrappingLayoutUsingWrapPanel;component/Images/thornbury-castle-hotel.
jpg"
        Height="150" ToolTipService.ToolTip="Thornbury castle
hotel" />
    </Border>
    <Border Margin="10 10 0 0">
        <Border.Effect>
            <DropShadowEffect />
        </Border.Effect>
        <Image
Source="/CreateWrappingLayoutUsingWrapPanel;component/Images/town-house-galleria.jpg
"
        Height="150" ToolTipService.ToolTip="Town house
galleria" />
    </Border>
</Intersoft:WrapPanel>
</Intersoft:UXScrollViewer>
```

```
        </Intersoft:UXWindow>  
    </Grid>  
</Intersoft:UXPage>
```

### Related Topics

- [How-to: Enable Drag Drop to Standard ListBox Using UXPanel](#)
- [Walkthrough: Create Uniform Layout Using UXGridPanel](#)
- [Walkthrough: Create Fluid UI Layout Using DockPanel](#)
- [Walkthrough: Create Autofit Layout Supporting Overflow with UXOverflowPanel](#)
- [Walkthrough: Create Auto-sizing Layout Using Viewbox](#)

293 related results